



Mainlube Superior Maintenance Lubricants Pty Ltd

14 Underwood, Botany NSW 2019, PO Box 353, Botany NSW 1455. Sydney Australia
Phone (61 - 2) 9700-0880 Fax (61 - 2) - 9700-0881 e-mail: info@mainlube.com.au

A.C.N. 003-602-195

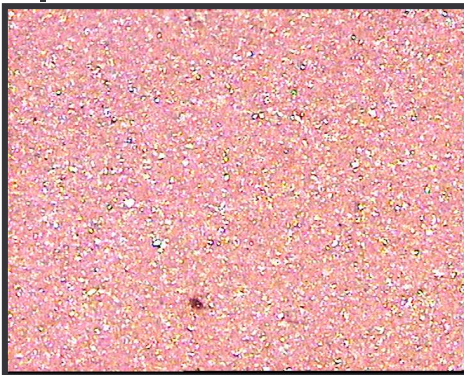
DATE 01/11/05

Wear Metal Analysis No 5163 Sonny – cosmo vyss

Attention; Sonny / James

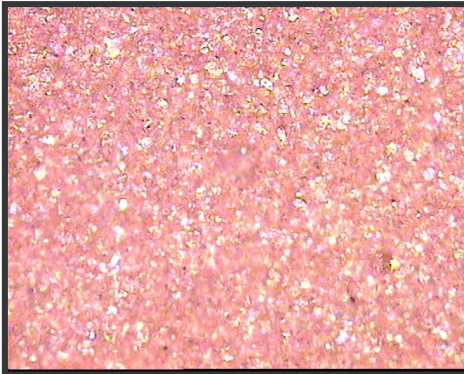
Objective. Check oil for Wear Metal Particles and any possible contamination, Information found used to establish machine condition and future maintenance requirements.

Method. Sample of approx 100 ml received from **cosmo vyss T56 Gearbox .@ .@ 33,000 K's on gearbox, 3000 k's running on Mainlube 154 Solid Boundary E P Gear Oil.** Sample preparation in accordance with Mainlube standard laboratory practices. One sample processed 1 ml in volume; therefore the amount seen in the video pictures is the actual debris concentration per ml of oil.

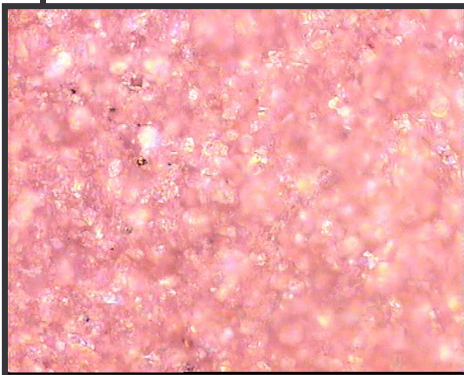


One mil. of the sample oil has been forced through a 13-mm diameter **0.3-micron membrane filter @ 150 P.S.I.** The membrane filter has caught any contaminants present, filters are glass slide mounted for examination. This image represents a 1-mm diameter circle focused on the top layer of the filter **@ 100X.** The green/blue coloured background is the microscopes bottom light shining up through the glass slide illustrating density level of dirt, metal chunks and debris particles.

This image demonstrates the average debris level for sample No. 5163
*To achieve an acceptable life from this application,
this image should be clear, no particles*



Overview density of dirt,
Wear Metal Chunks and debris particles @ **200X.**



Overview density of dirt,
Wear Metal Chunks and debris particles @ **500X.**

Recommendations

This Gearbox is running perfect.

Sonny made an excellent job of double flushing, there is no carry over metal from the previous problem.

There is no new metal being made at this stage.

Retest at 10,000 k's

This analysis is intended as an aid in predicting mechanical wear, and should be used in conjunction with (and not as a replacement for) your normal maintenance routine for the care of your machinery. The user will take all care in the processing of samples but no guarantee, express or implied, is made against failure of this piece of equipment or a component part hereof

Steve Simmonds ATCAE
Managing Director