

Mainlube Superior Maintenance Lubricants Pty Ltd

14 Underwood, Botany NSW 2019, PO Box 353, Botany NSW 1455. Sydney Australia
 Phone (61 - 2) 9700-0880 Fax (61 - 2) - 9700-0881 e-mail: info@mainlube.com.au

A.C.N. 003-602-195

DATE 20/07/06

Wear Metal Analysis No 6042 ACT – Cross8

Attention; Shane

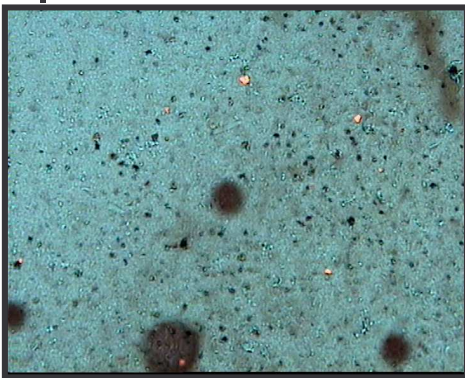
Objective. Check oil for Wear Metal Particles and any possible contamination, Information found used to establish machine condition and future maintenance requirements.

Method. Sample of approx 100 ml received from **Cross 8 @ 55,000 ks, 5000 ks running on Motul Turbolight 10w40, Holden Oil Filter.** Sample preparation in accordance with Mainlube standard laboratory practices. One sample processed 1 ml in volume; therefore the amount seen in the video pictures is the actual debris concentration per ml of oil.

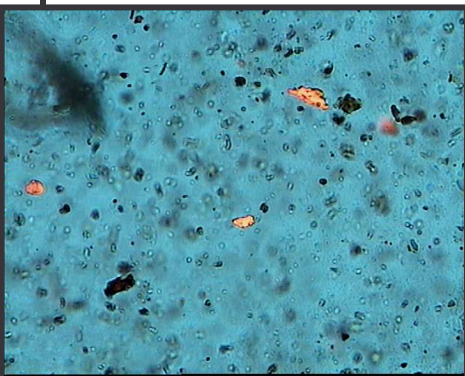


One mil. of the sample oil has been forced through a 13-mm diameter **0.3-micron membrane filter @ 150 P.S.I.** The membrane filter has caught any contaminates present, filters are glass slide mounted for examination. This image represents a 1-mm diameter circle focused on the top layer of the filter **@ 100X**. The green/blue coloured background is the microscopes bottom light shining up through the glass slide illustrating density level of dirt, metal chunks and debris particles.

This image demonstrates the average debris level for sample No. 6042
*To achieve an acceptable life from this application,
 this image should be clear, no particles*



**Overview density of dirt,
 Wear Metal Chunks and debris particles @ 200X.**



**Overview density of dirt,
 Wear Metal Chunks and debris particles @ 500X.**

Recommendations

This machine is running reasonably well.

Retest every 5000 klms until trends are established.

This analysis is intended as an aid in predicting mechanical wear, and should be used in conjunction with (and not as a replacement for) your normal maintenance routine for the care of your machinery. The user will take all care in the processing of samples but no guarantee, express or implied, is made against failure of this piece of equipment or a component part hereof.

Steve Simmonds ATCAE
Managing Director